



2025 annual report to the Community

Echunga Primary School and Echunga Preschool

Echunga Primary School number: 123

Echunga Preschool number: 1570

Partnership: Heysen



School principal:

Renee Lynn

Signature

Date of endorsement:

25/02/2026



Context Statement

Echunga Primary School caters for students from R-6. At the time of this report, the enrolment in 2025 is 149. Echunga Primary School is classified as Category 6 on the Department for Education Index of Educational Disadvantage. At the time of this report, the school population includes 3% Aboriginal students, 5% students with disabilities. Further information about the school is available on the school's website (including its context statement), as well as the My School website.

Information about Echunga Preschool is available on the centres website, as well as the Australian Childrens Education and Care Quality Authority (ACECQA) website.

Data Source: Department for Education data holdings from Mid census captured in AUGUST 2025.

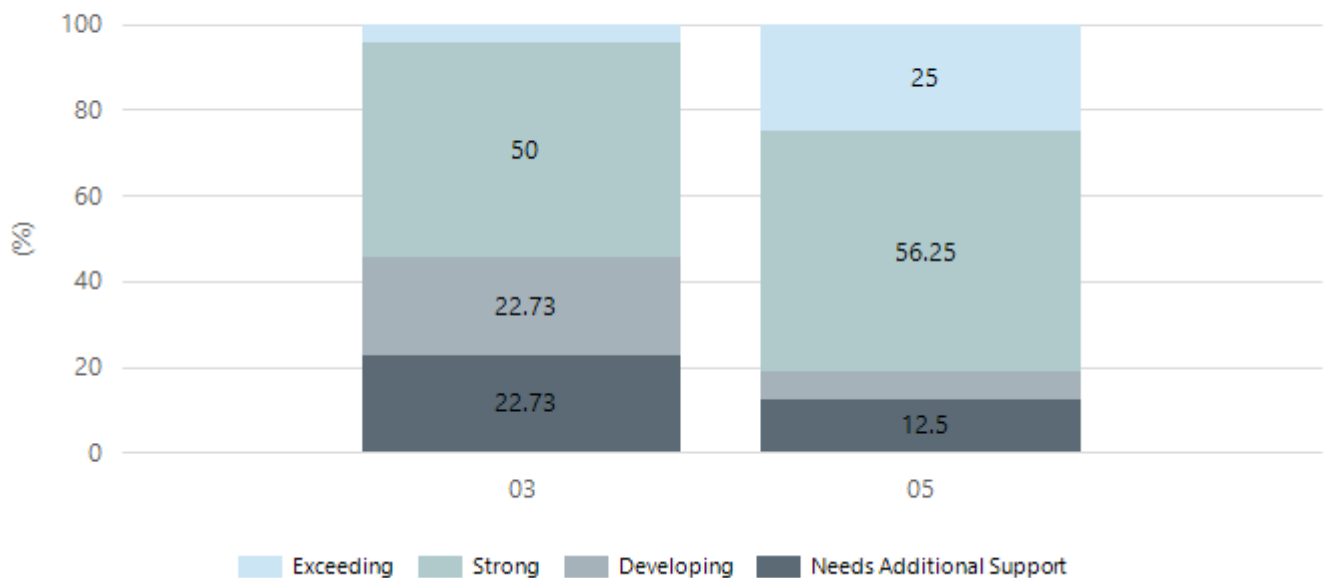
Governing Council Report

Performance Summary

NAPLAN Proficiency

In 2023 the Australian Curriculum, Assessment and Reporting Authority (ACARA) - a Commonwealth Independent statutory authority - announced changes to NAPLAN performance reporting. The new approach replaces the previous numerical NAPLAN bands and the national minimum standard.

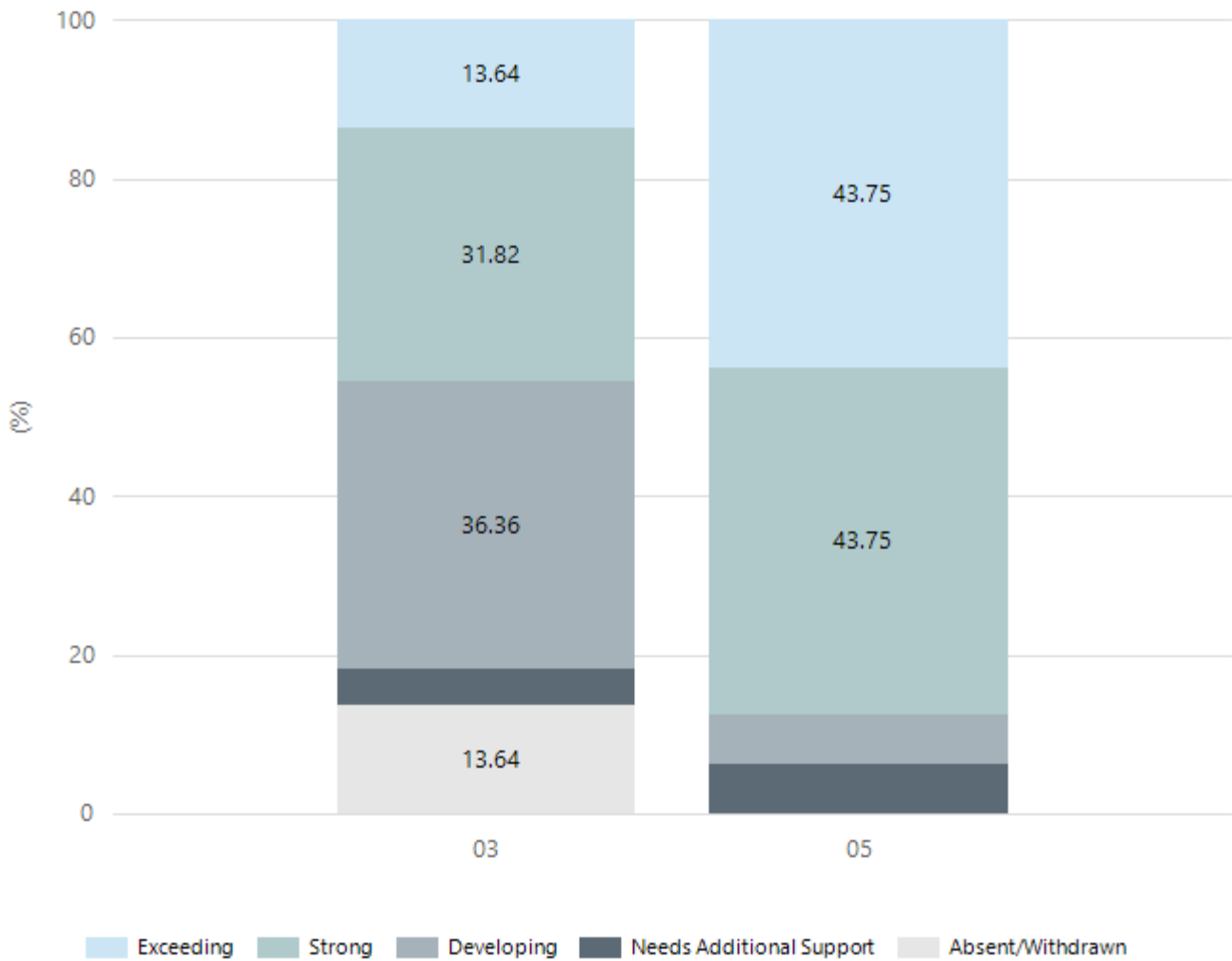
Numeracy



Year Level	03	05
Exceeding	1	4
Strong	11	9
Developing	5	1
Needs Additional Support	5	2
Total	22	16

Data Source: Department for Education Assessment Data Holdings, 2025. If there are less than 6 students who sat NAPLAN in a school, no information will be shown. If a year level has less than 6 students, that year level will not be shown in NAPLAN results.

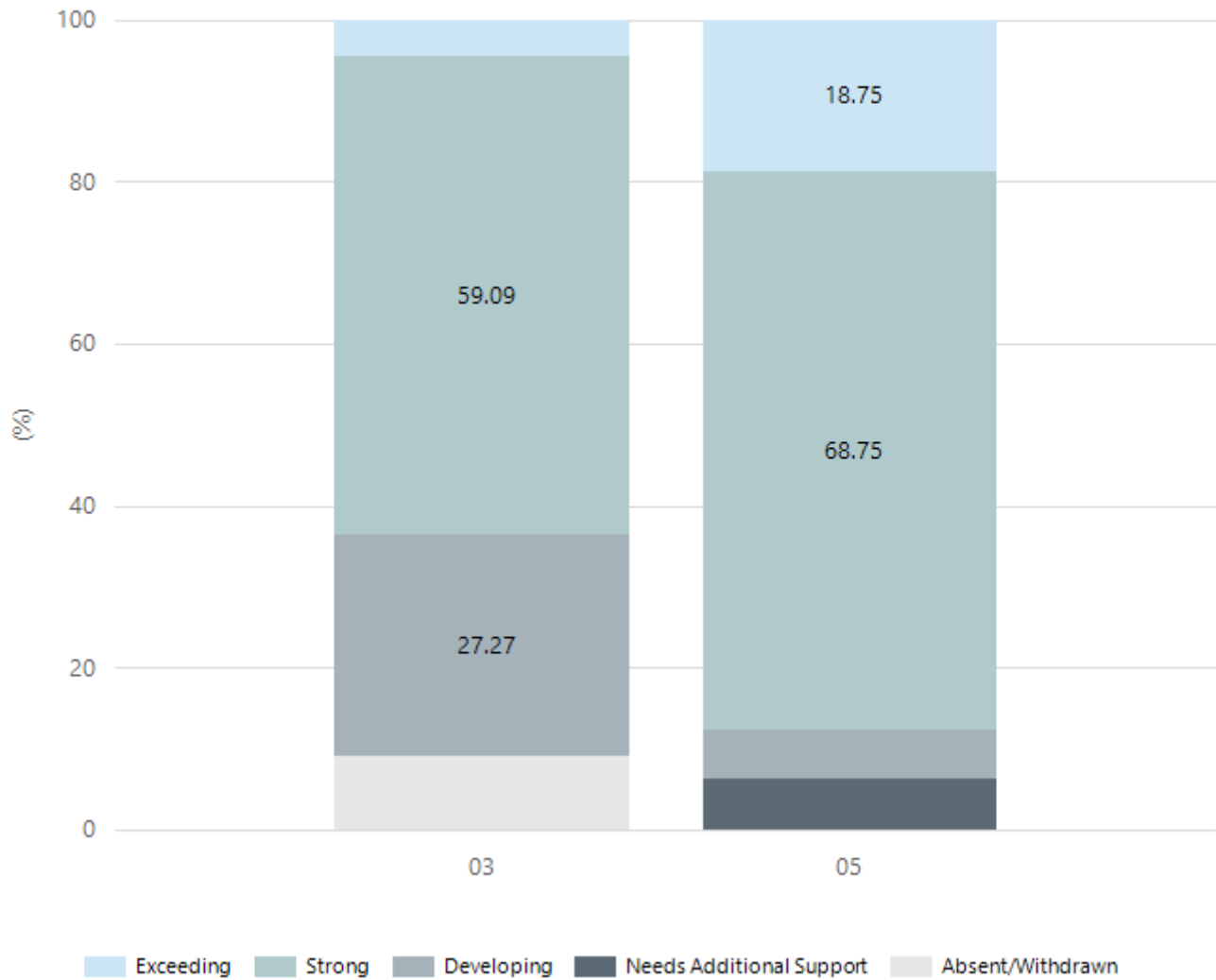
Reading



Year Level	03	05
Exceeding	3	7
Strong	7	7
Developing	8	1
Needs Additional Support	1	1
Absent/Withdrawn	3	
Total	22	16

Data Source: Department for Education Assessment Data Holdings, 2025. If there are less than 6 students who sat NAPLAN in a school, no information will be shown. If a year level has less than 6 students, that year level will not be shown in NAPLAN results.

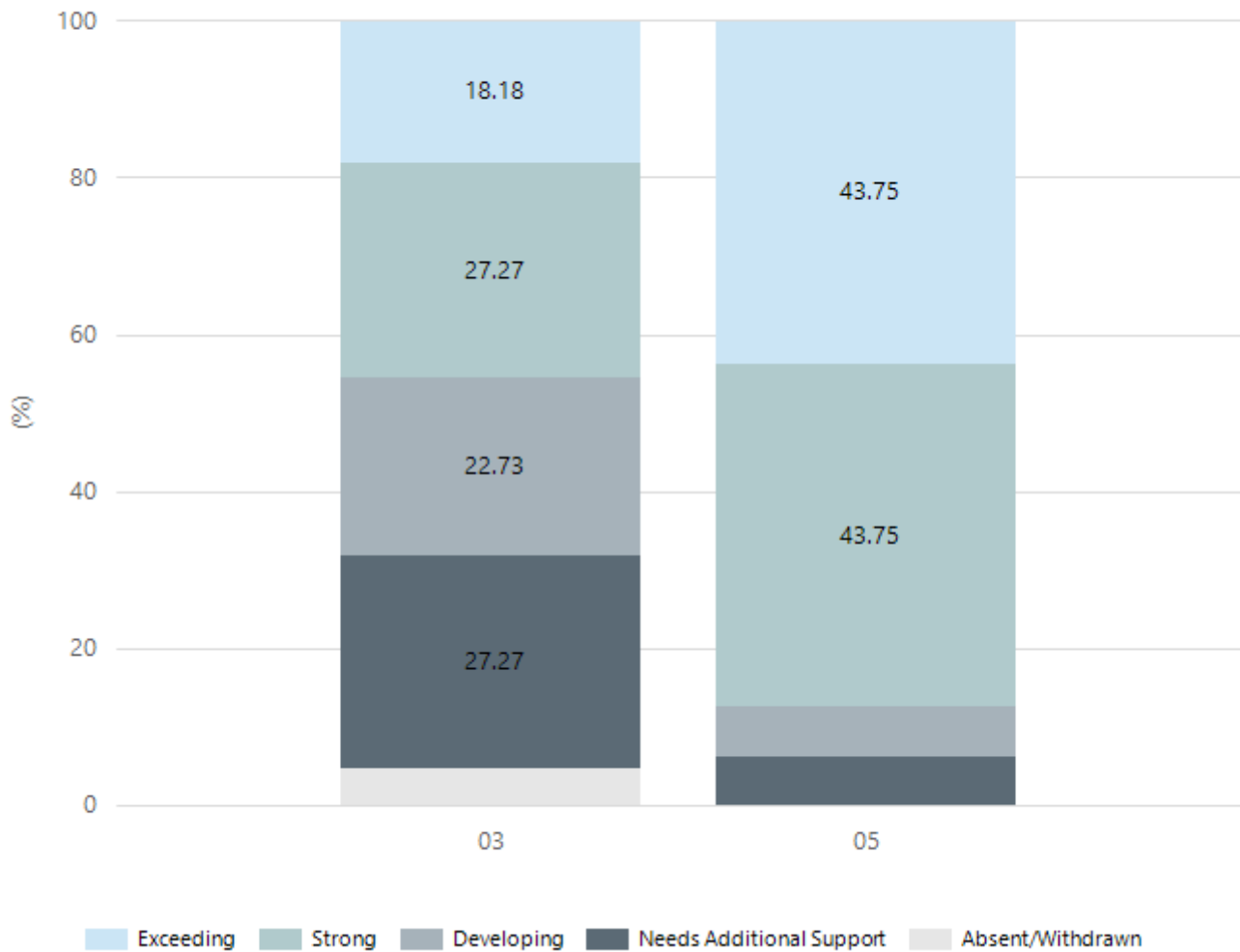
Writing



Year Level	03	05
Exceeding	1	3
Strong	13	11
Developing	6	1
Needs Additional Support		1
Absent/Withdrawn	2	
Total	22	16

Data Source: Department for Education Assessment Data Holdings, 2025. If there are less than 6 students who sat NAPLAN in a school, no information will be shown. If a year level has less than 6 students, that year level will not be shown in NAPLAN results.

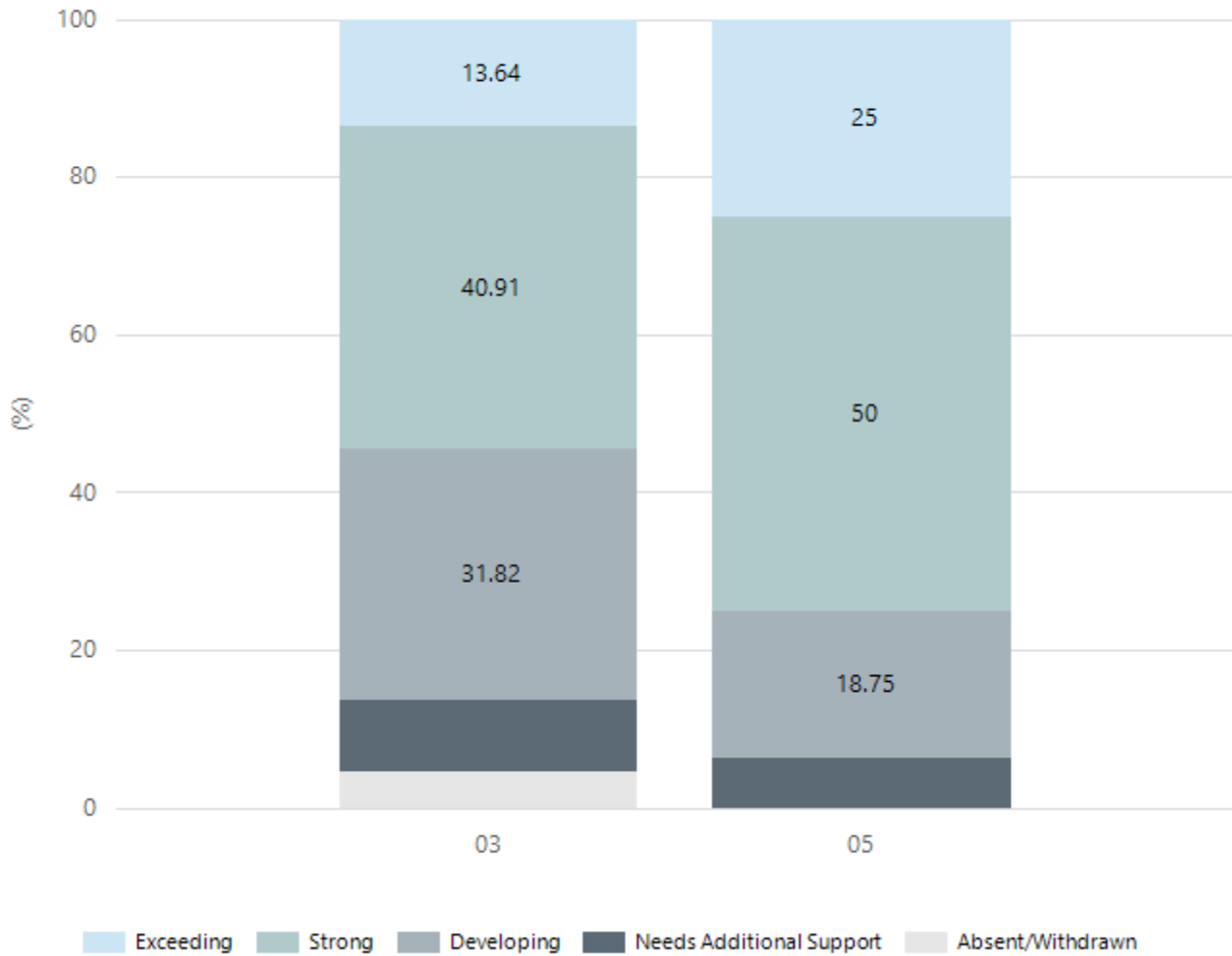
Grammar



Year Level	03	05
Exceeding	4	7
Strong	6	7
Developing	5	1
Needs Additional Support	6	1
Absent/Withdrawn	1	
Total	22	16

Data Source: Department for Education Assessment Data Holdings, 2025. If there are less than 6 students who sat NAPLAN in a school, no information will be shown. If a year level has less than 6 students, that year level will not be shown in NAPLAN results.

Spelling



Year Level	03	05
Exceeding	3	4
Strong	9	8
Developing	7	3
Needs Additional Support	2	1
Absent/Withdrawn	1	
Total	22	16

Data Source: Department for Education Assessment Data Holdings, 2025. If there are less than 6 students who sat NAPLAN in a school, no information will be shown. If a year level has less than 6 students, that year level will not be shown in NAPLAN results.

Preschool Attendance

	Term 1	Term 3
2022 centre	90.5%	90%
2023 centre	89.5%	81.8%
2024 centre	91.6%	76%
2025 centre	86.6%	86.6%

Based on preschool sessions attended during a two-week reference period in Term 1 and Term 3. The table represents the proportion of hours attended out of total hours enrolled (booked). Data Source: Department for Education attendance data.

School Attendance

Year Level	2023	2024	2025
Reception	87.0%	90.7%	89.6%
Year 01	90.2%	88.5%	92.0%
Year 02	92.6%	89.7%	83.9%
Year 03	90.8%	91.0%	90.1%
Year 04	86.9%	92.7%	90.2%
Year 05	85.6%	92.4%	89.3%
Year 06	88.1%	89.2%	89.3%
Total	88.8%	90.4%	89.2%

Data Source: Department for Education Attendance Data, Semester 1 Report 2025. A blank cell indicates there were no students enrolled. 'Primary Other' includes students enrolled in specialised education options. 'Secondary Other' includes students who have already spent a year at Year 12 and elected to undertake further study at Year 12.

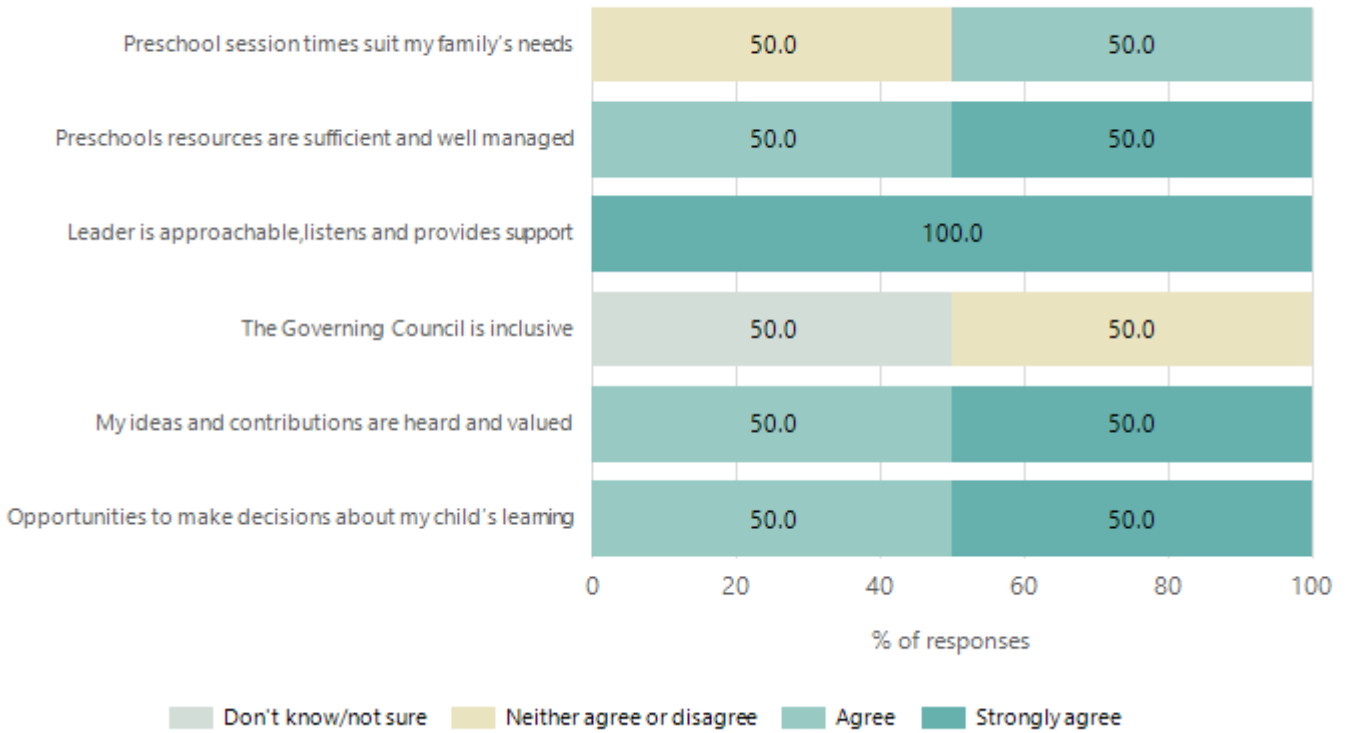
Attendance Comment

In South Australia, preschool attendance is not compulsory, but it is strongly encouraged. Preschool gives children the best opportunity to develop skills, which prepare them for school. These benefits include establishing positive routines and habits, friendships and connections as well as developing communication, problem-solving and creative skills.

In South Australia, all children and young people must be in school from 6 years to 16 years old. They must attend a government or non-government school full time. From age 16 to 17 however, young people must attend school or an approved learning program (such as an apprenticeship, traineeship, accredited course or university). Schools and parents must encourage and support students to come to school every day. Parents and caregivers must make sure their child is enrolled in a school, and attends school all day and everyday it is open, unless a child is sick or has an approved exemption. Teachers and leaders actively follow up when a student misses school, including recording all absences and non-attendance. All schools in South Australia have local attendance procedures governed under the Education and Children's Services Regulations 2020.

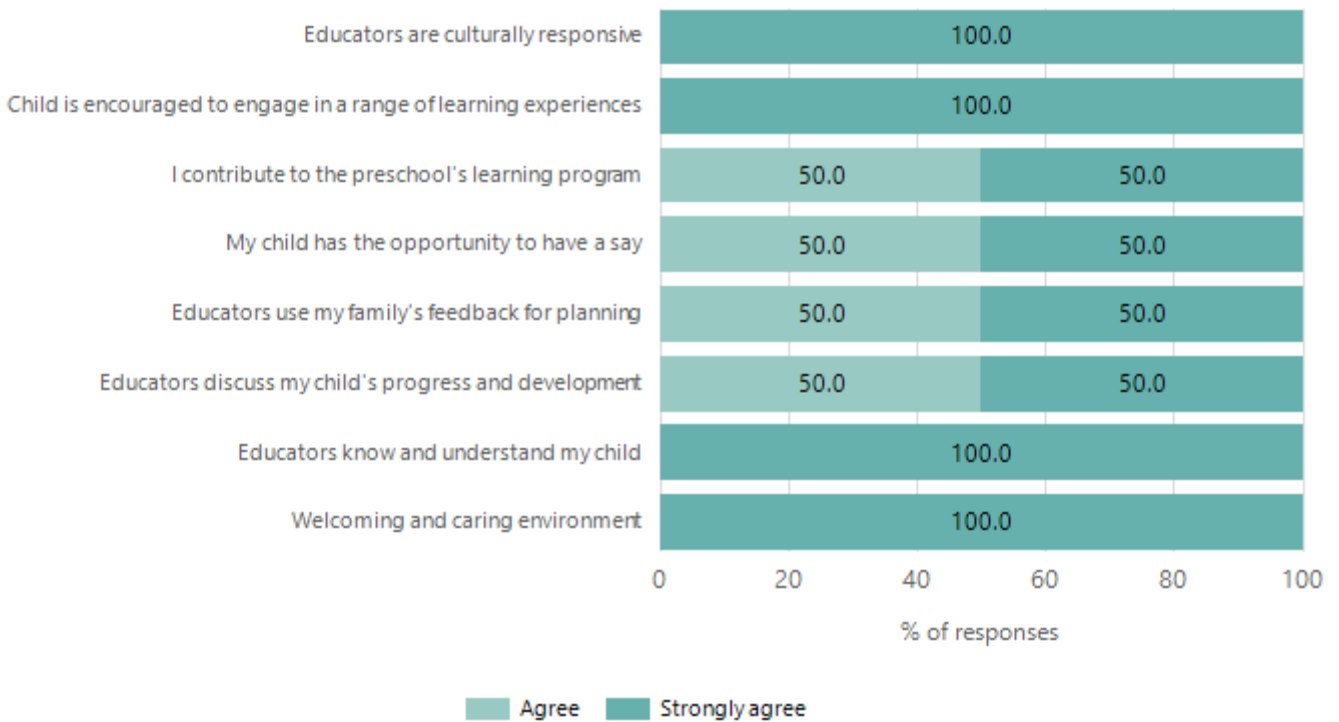
Preschool Family Opinion Survey

Governance, Leadership and Management



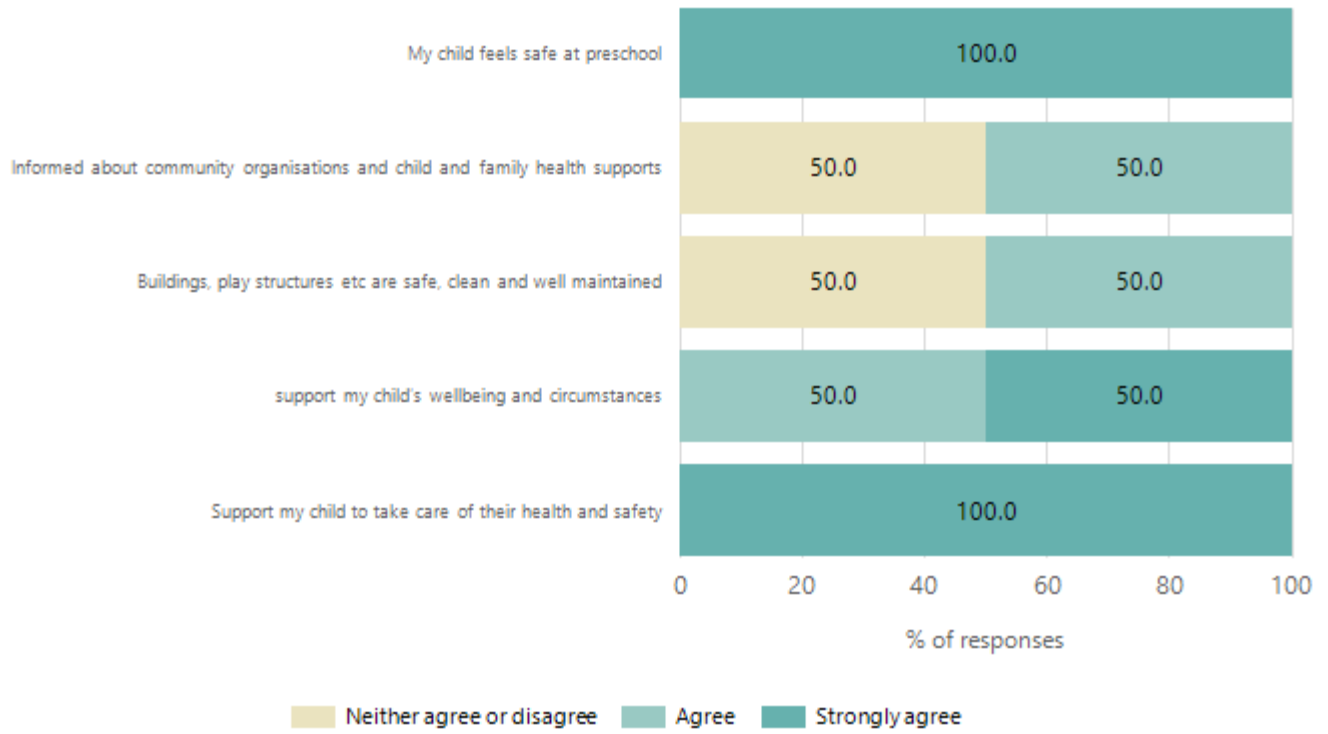
Data Source: 2025 Department for Education Preschool Family Opinions Survey, Term 3 2025.

Quality of Teaching and Learning



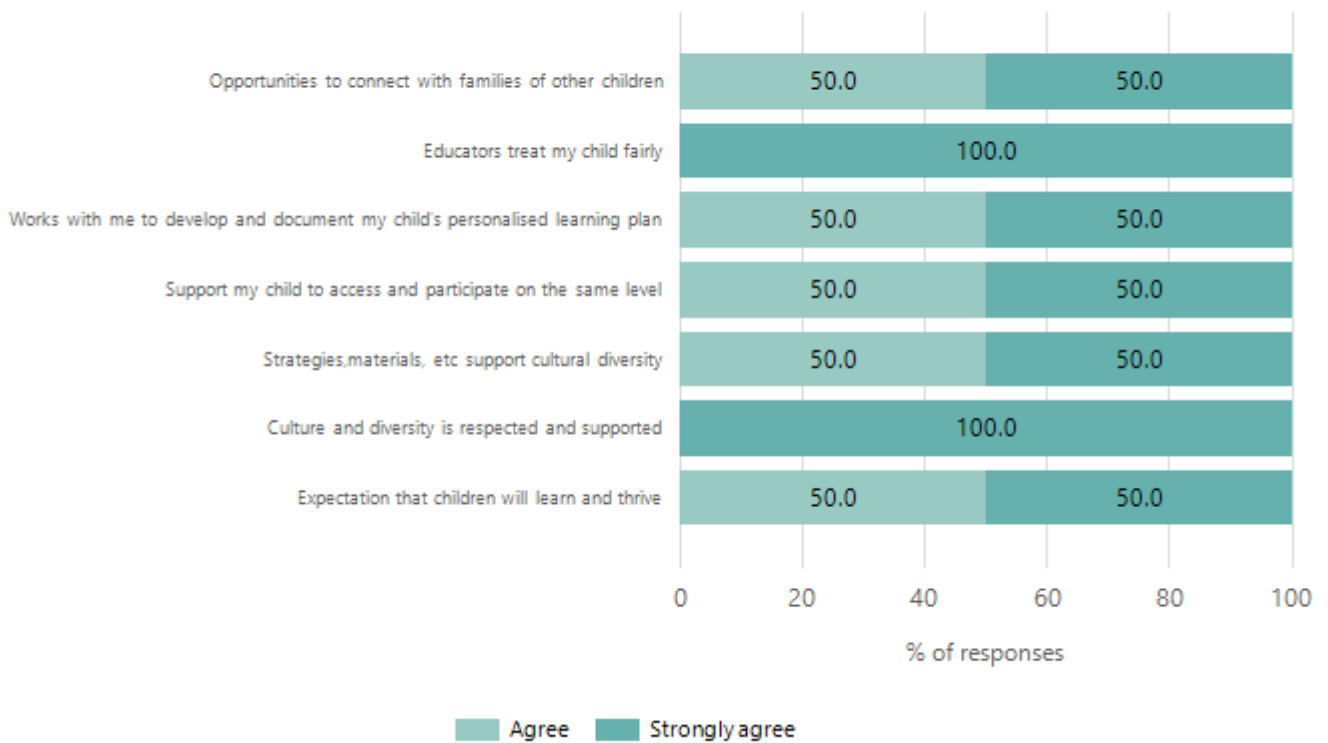
Data Source: 2025 Department for Education Preschool Family Opinions Survey, Term 3 2025.

Safety, Health and Wellbeing



Data Source: 2025 Department for Education Preschool Family Opinions Survey, Term 3 2025.

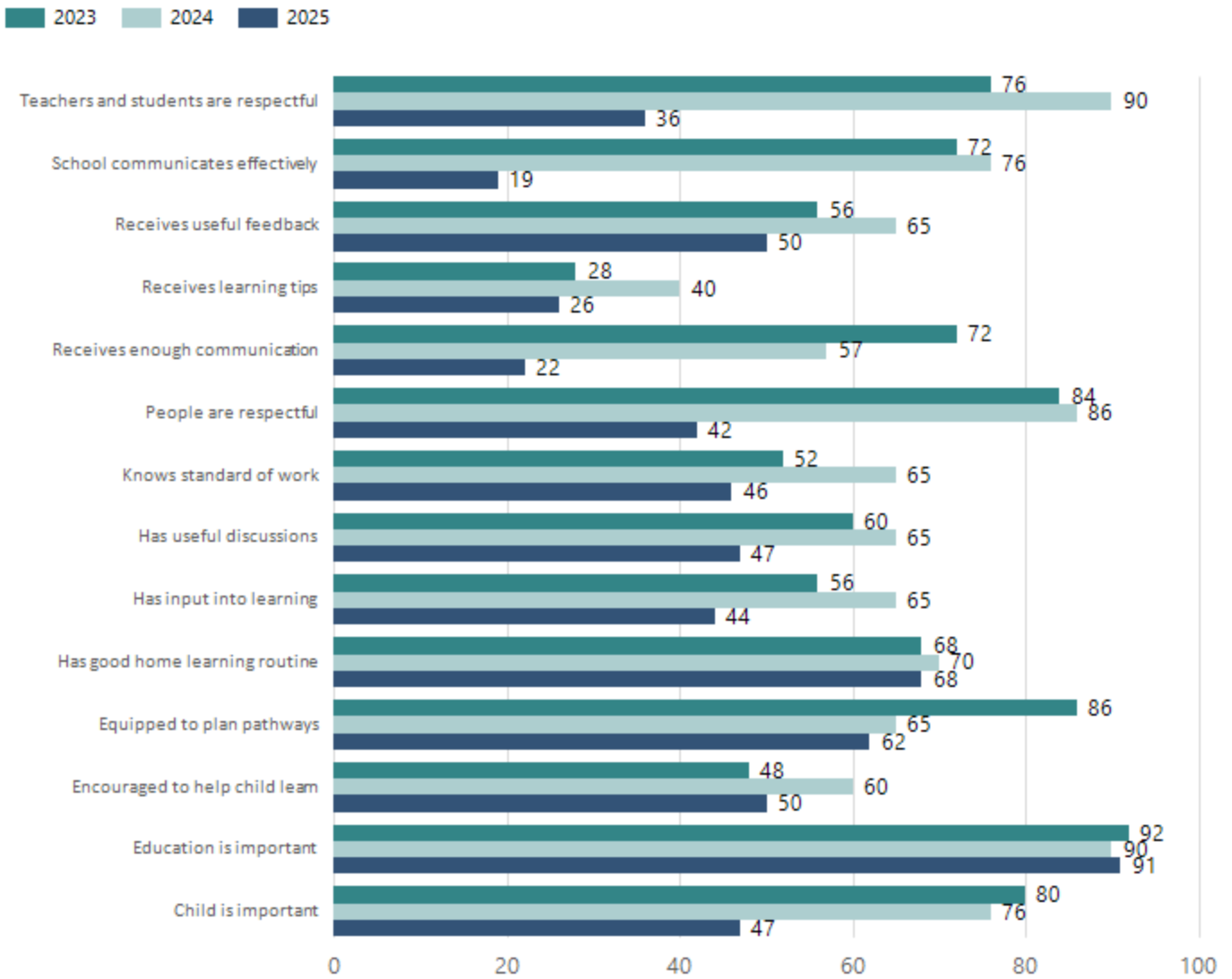
Support and Inclusion



Data Source: 2025 Department for Education Preschool Family Opinions Survey, Term 3 2025.

School Parent Opinion Survey Results

Proportion of agree/strongly agree response(%)



Data Source: 2025 Department for Education Parent Opinions Survey, Term 3 2025.

Destination Schools

Feeder Schools (Site number - Name)	2023	2024	2025
0123 - Echunga Primary School	91.2%	93.5%	81.1%
8420 - St Mark's Lutheran Primary School		4.4%	
9999 - Unknown			10.8%

Note: The data is collected in term 3. It does not reflect actual schools enrolled in by existing preschool children. A blank cell indicates there was no data for students enrolled.

Data Source: Department for Education Destination Data Report, 2025.

Intended Destination

Leave Reason	Number	%
IS - INTERSTATE	10	42.0%
NG - ATTENDING NON-GOV SCHOOL IN SA	9	38.0%
TG - TRANSFERRED TO SA GOVERNMENT SCHOOL	1	4.0%
U - UNKNOWN	4	17.0%

Data Source: Department for Education Destination Data Report, 2025. Data extract term 3 2025. Data shows recorded destinations for students that left the school in the previous year. Data is uploaded by schools in term 3 and may not reflect final or total figures at time of report creation.

Highest Qualifications held by the teaching workforce and workforce composition

All teachers at this school are qualified and registered with the SA Teachers Registration Board.

Qualification Level	Number of Qualifications
Bachelor's degrees or Diplomas	11
Postgraduate Qualifications	5

Data Source: Data extracted from Mandatory Workforce Information Collections as on the last pay date of June 2025. As self-reported by staff in the system.

Please note: Data includes staff who are Actively employed and on extended paid leave. Please note only the highest qualification of the Teaching staff is reported. Excludes any number of other certifications earned.

Workforce composition including indigenous staff

	Teaching Staff		Non-Teaching Staff	
	Indigenous	Non-Indigenous	Indigenous	Non-Indigenous
Full-Time Equivalents	0.0	12.4	0.0	7.1
Persons	0.0	16.0	0.0	14.0

Data Source: Data extracted from Mandatory Workforce Information Collection as on the last pay date of June 2025.

Please note: Data includes staff who are actively employed and on extended paid leave. "Indigenous category" is self-reported by staff in the system.

Financial Statement

Funding Source	Amount
Grants: State	
Grants: Commonwealth	
Parent Contributions	
Fund Raising	
Other	

Data Source: School supplied data.